



VOYDOM



NEW

IN & OUTDOOR

COLLECTIONS

Suave

by Marcel Wanders

"Transforming outdoor spaces into true oasis, with the unique purpose of drawing people together and celebrating life" - Marcel Wanders.

Pieces in the collection include a modular sofa, puff in five different sizes and stylish planters, available in three different sizes. Overall, new textures and delicate fabrics reflect the sensuality, warmth and poetry of Marcel Wanders.





Marcel "These pieces, just for themselves, are designed to create a beautiful environment that sets a very stylish mood. With the unique purpose of drawing people together, this collection allows people to celebrate life." Gabriele "Working with polyurethane injection moulding we introduce a new level of softness, comfort, and relaxation that transforms the space where the pieces are placed. We selected calm, sensual and appealing colours to create a welcoming, iconic environment that becomes the place to be."

Fusing craftsmanship with advanced technology, attention to detail with industrial manufacture, and blurring the boundaries between indoor and outdoor, the Suave collection is the reflection of this great synergy.



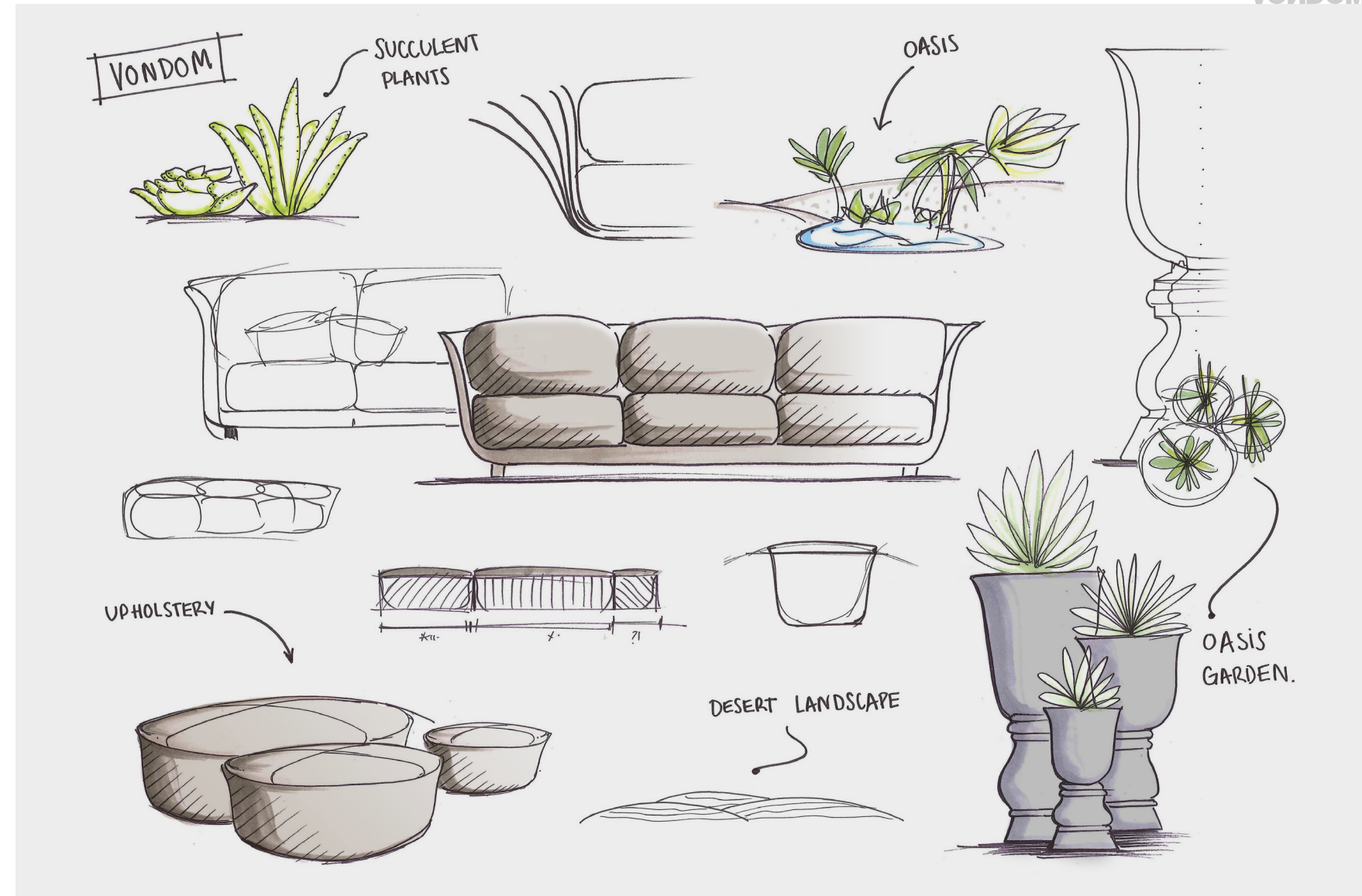


Either by placing outdoor furniture inside your home or, by bringing the comfort and warmth of the indoors outdoors, and deeply rooted in the company's key values of resistance, adaptability and technique, Vondom makes possible to enjoy the In & Outdoor life.





Marcel Wanders in his studio in Amsterdam, The Netherlands.



The Suave collection, "soft" in Spanish, is the result of a 5-year collaboration between world-renowned design studio Marcel Wanders and Spanish furniture company VONDOM.



Tablet

by Ramón Esteve

The TABLET collection seeks to relate the new technologies and their flexibility to the versatility of the modular structure by creating a sofas program based on identity and integration duality. The personality of the piece coexists with the space and at the same time, adapts to the style of it.





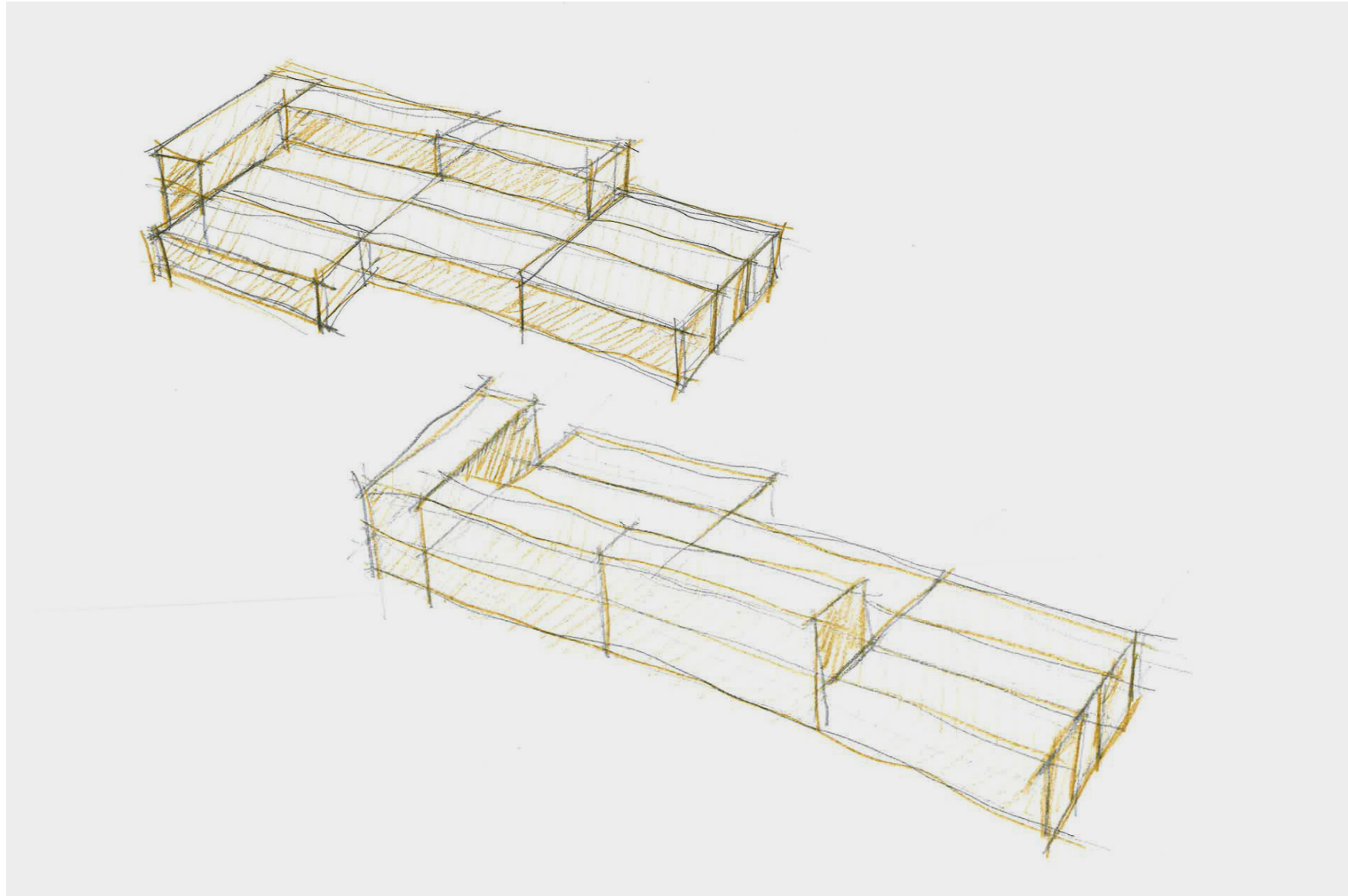
This versatility is evident through the adaptability of the furniture to different uses, generating a reticular set derived from the free juxtaposition of the modules where compositional freedom is the main objective. The upholstery, made by independent modular partitions, allows generating different forms that maintain a visual continuity.





The composition of the collection, centered on polyurethane foam with internal metallic structure and the polypropylene fabric, makes a perfect Tablet for exteriors and interiors thanks to its meticulous aesthetics and finishes.





Ramón Esteve
Valencia, Spain.





VONDOM

Head Quarters - Factory

VONDOM S.L.U.
Av. Valencia, 3 - 46891 - El Palomar, Valencia - Spain
t.: +34 96 239 84 86
info@vondom.com - www.vondom.com

USA Branch

VONDOM LLC.
8803 NW 23rd Street, Miami, FL 33172 - USA
ph.: +1 786 391 0274 - +1 786 353 9108
infousa@vondom.com - www.vondom.com

China Branch

VONDOM Lifestyle Design (Shanghai) Co., Ltd.
Building C6-103, No. 700, Wan Rong Road, Jing An Zone
200072 - Shanghai - China - ph.: +86 21 6521 9916
infochina@vondom.com - www.vondom.com